



DEN BON FU WI DE AINI DÉDÉ

U mu luku bun !



A siki fu HLB doo aini la Guyane !

A siki di e kii den lemiki bon anga pesina, kowshow....

Den siki na foto :

A datum : january 2023



(1) Te a bong bigin siki : a bon e taya taka fu taka.



(1) Deng maïki fu deng uwiii : kengi kulolu.



(1) A taanga maïki fu a uwiii.



(1) Den bon di de na dédé mofu.



(2) Fa ju e sabi a siki na chii : a chii e dee, ai kengi anga aikon piking

Pe a foto komoto : R. FONTAINE FDGDON Réunion (1) et Gilles Cellier ANSES Réunion (2)

Na Da Ruben ATANSO, Ede mang fu a GDA fu Soolang, anga Ma Laurietta CAROLINA, Ede mang fu a GDA Fu APATOU pouu eng na bushikonde sama tongo.

STOP Fa fu a siki no mu pati ?



No seli bon, na pati den, na teke pansu



No pandi wan siki bon



Puu den siki bon



Déeshi a sani di e tiaa eng anga a spechial déeshi



Contact

I sa kai wi fi ju si enke den bon siki of fi ju wani sabi taa sani :

✉ contact@fredonguyane.com

☎ 06 94 96 25 74

🌐 <https://fredon.fr/guyane>

✉ salim-973@guyane.pref.gouv.fr

☎ 06 94 21 86 21





DEN BON FU WI DE AINI DÉDÉ



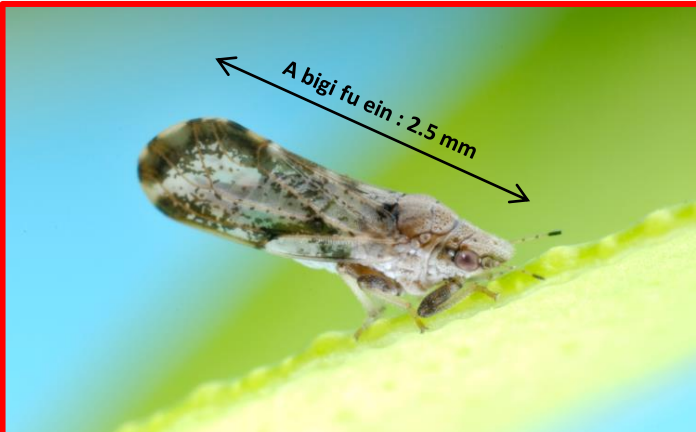
U mu luku bun !

A shineisi siki fu bon doo la Guyane !

Aigi deng lemiki bong, deng apéeshina bong, deng gaang pomgpomg bong anga deng kowshow bong a shiki di e kij di deng e kaï HLB.

A siki na foto :

A datum : january 2023



(1) Te a siki bigi : a soigi sutu e fee te anga 2.5km fawé.



(2) Den piking bon.



(1) A woon.



(3) A igi fu den woon.



(4) A beibi kaka fu a sani di e gi a shineisi shiki e geï Wang weti teteï .



(5) A édé na bon anga ein sikin go na tapu.

Diaphorina citri (DIAACI) - https://gd.eppp

STOP Fa fu a siki no mu pati ?

Na Da Ruben ATANSO, Ede mang fu a GDA fu Soolang, anga Ma Laurietta CAROLINA, Ede mang fu a GDA Fu APATOU pouu eng na bushikande sama tongo.

Pe a foto komoto : Jeffrey W. LOTZ FDACS-Division of Plant Industry, Bugwood.org (1); FREDON Guyane (2); Michael E. ROGERS, University of Florida citrus Research and Education Center, Lake Alfred (3); Lyle BUSS, Department of Entomology and Nematology, University of Florida (4); David HALL, USDA Agricultural Research Service, Bugwood.org (5)



No seli bon, na pati den, na teke pansu



No pandi wan siki bon



Desi den anga desi

I sa kai wi fi ju si enke den bon siki of fi ju wani sabi taa sani :



Contact

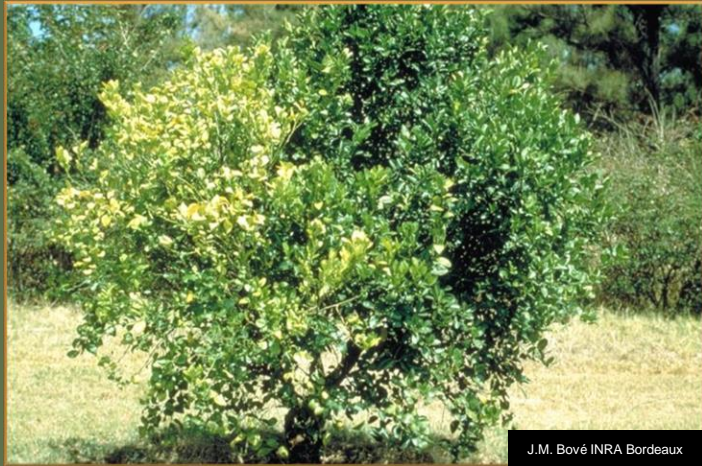
✉ contact@fredonguyane.com
☎ 06 94 96 25 74
🌐 <https://fredon.fr/guyane>

✉ salim-973@guyane.pref.gouv.fr
☎ 06 94 21 86 21



SEEKA DENG SHIKI SHII BONG

➔ Ju e sii :



J.M. Bové INRA Bordeaux

Anga/ofu



J.M. Bové INRA Bordeaux

Anga/ofu, wi e piki wi :

Fu wan resultat positif fu wan siki te HLB.



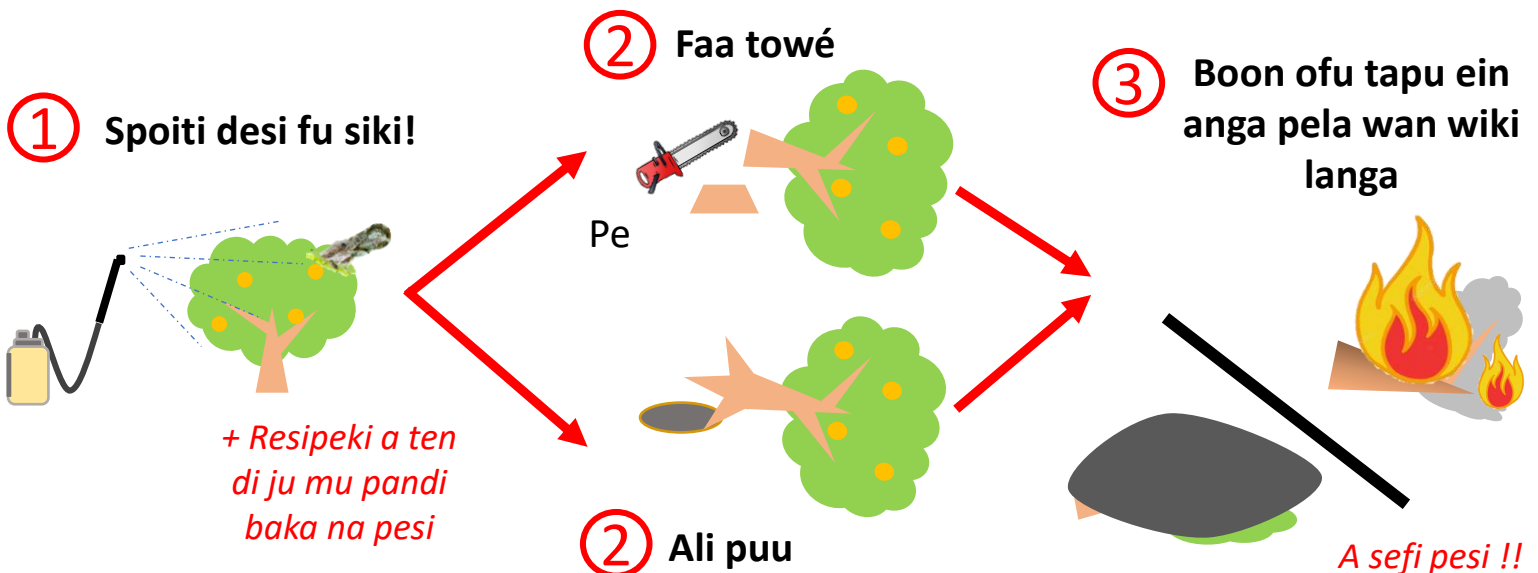
➔ San ju mu du ?

Datum fu : october 2022

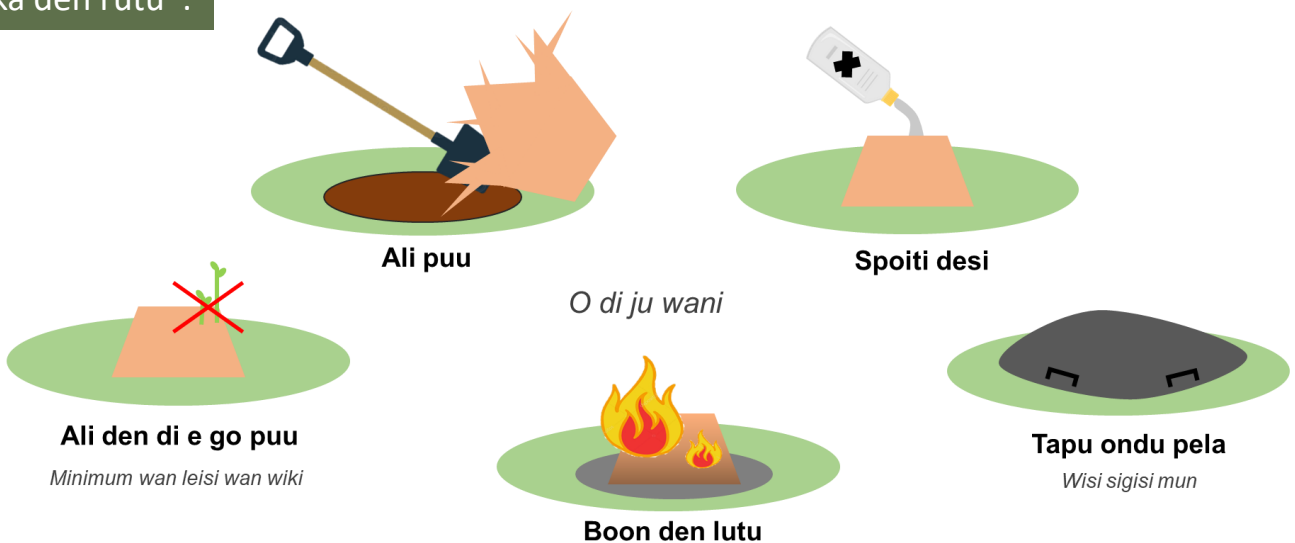
➔ Kii den siki bon :

Pe a foto komoto : Florida Division of Plant Industry Archive, Florida Department of Agriculture and Consumer Services, Bugwood, J.M. Bové, INRA Centre de Recherches de Bordeaux, Bugwood.org

Na Da Ruben ATANSO, Ede mang fu a GDA fu Soolang, anga Ma Laurietta CAROLINA, Ede mang fu a GDA Fu APATOU pouu eng na bushikonde sama tongo.



➔ Seka den rutu :



Contact

I sa kai wi fi ju si enke den bon siki of fi ju wani sabi taa sani :

✉ contact@fredonguyane.com

☎ 06 94 96 25 74

🌐 <https://fredon.fr/guyane>

✉ salim-973@guyane.pref.gouv.fr

☎ 06 94 21 86 21

